



GF-T8 GFT8 2 8-Toggle Switch/LED Panel Cockpit Control System



Congratulations on your purchase of a **GoFlight GF-T8 (8-Toggle Switch/LED Panel Module)**, part of the extensive family of GoFlight GF Cockpit Control System modules.

The GF-T8 is designed to operate with a wide variety of simulated aircraft and is sure to make your flight simulation experience more realistic and enjoyable.

The steps below will assist in ensuring the GF-T8 will be easy to install, configure and use. Following these instructions will help to get you up in the “virtual skies” as quickly as possible.

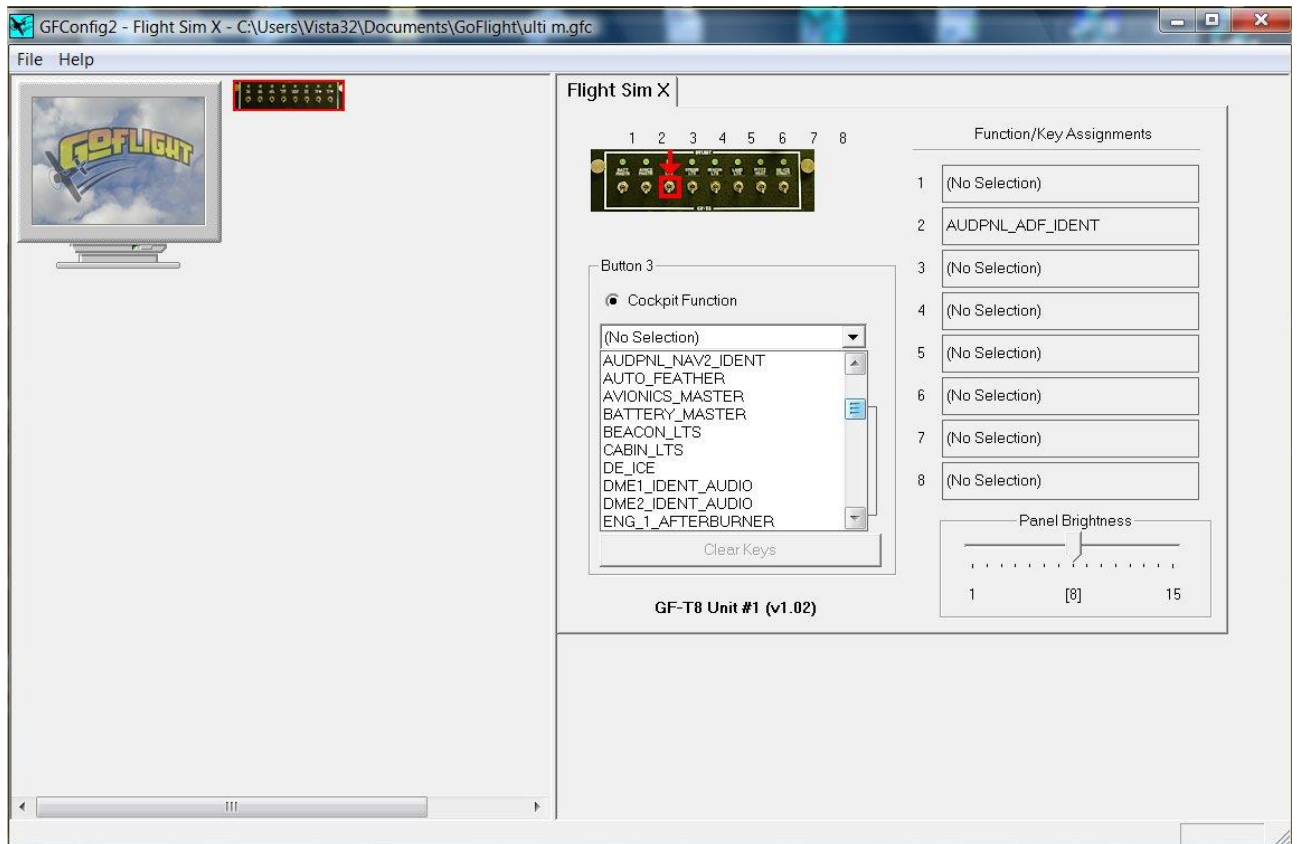
NOTE If you own other GoFlight hardware and have already installed the most current version of software on your system, you do not need to install the software again. Simply skip the software installation steps in the instructions below.

Installing a GF-T8 Module

1. Using a web browser go to www.goflightinc.com.
2. On the GoFlight home page click Support.
3. Click on “GF Config x.xx” to download the latest module drivers and configuration software.
4. Click “Run” or “Save” and then follow the instructions to install the software. If the software installer detects that GoFlight software is already installed on your system, it will prompt you to overwrite. Click the **Yes** button to overwrite the existing version of GoFlight software. This is useful if you wish to keep the configuration settings for other GoFlight modules installed on your system. However, you should first make sure that the software you are overwriting is an older version and not a newer one.
5. If you are going to mount the GF-T8 module into a GoFlight module rack, install the module in any desired location in the rack using the two thumbscrews provided.

NOTE: When tightening the GF-T8 mounting thumbscrews, be careful not to over-tighten the screws as it is possible to strip the threads in the mounting holes or break the mounting screws if excessive force is applied.

6. Plug the provided USB cable “B” connector end (square) into the connector on the back of the GF-T8 module.
7. Plug the USB cable “A” connector end (rectangular) into a USB port on your computer or hub. The message “New Hardware Found” may appear briefly, showing that the GF-T8 was detected.



- *To configure your GF-T8 for use with your favorite flight simulator, run the **GFConfig** program. Either click Start-->Programs-->GoFlight to access the GoFlight program or...
- *Double-click on the **GoFlight Config** icon on your desktop, if you chose to create one

8. Click on the graphic illustration of the GF-T8. It will become highlighted in a red outlined border. Then assign the desired function for each toggle switch from the drop-down list provided for each of the 8 toggle switches.

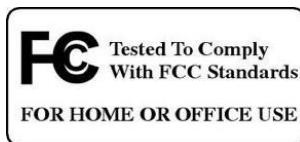
Please be sure to also refer to the GF-T8 functionality as described in **GFConfig On-Line Help** - under *Help* on the GFConfig menu bar, Select the *Contents* tab. Then select the *GF-AC Function Reference* and then select the *GF-ATC Function Reference*. Here you will find all the usable functions with their definitions and Usage Notes for the GF-T8 module.

GF-T8 Warranty

This product is warranted to the original purchaser to be free from defects in materials and workmanship for a period of one (1) year from the date of purchase. During this warranty period, GoFlight Technologies, Inc. ® ("GoFlight") will, at its option, repair or replace, at no charge, any component determined to be defective. The liability under this warranty is limited to the repair and/or replacement of the defect or defective part, and does not include shipping expenses. This warranty does not apply if, in the determination of GoFlight, this product has been damaged by accident, abuse, improper usage, or as a result of service or modification by anyone other than GoFlight.

NO OTHER WARRANTIES ARE EXPRESSED OR IMPLIED, INCLUDING BUT NOT LIMITED TO IMPLIED WARRANTIES OF SALABILITY AND FITNESS FOR A PARTICULAR PURPOSE. GOFLIGHT TECHNOLOGIES, INC. IS NOT RESPONSIBLE FOR CONSEQUENTIAL DAMAGES. SOME STATES DO NOT ALLOW EXCLUSION OR LIMITATION OF INCIDENTAL OR CONSEQUENTIAL DAMAGES, SO THE ABOVE LIMITATION OR EXCLUSION MAY NOT APPLY TO YOU.

This warranty gives you specific legal rights, and you may also have other rights which vary from state to state.



GoFlight Technologies, Inc. 163 SW Freeman Ave. Suite D, Hillsboro, Oregon, USA 97123

Phone: 1-503-895-0242

www.goflightinc.com

P/N GF=T8-vPOH-002 Revision 2.2 25Sep2010
Copyright © 2010 GoFlight Technologies, Inc. All rights reserved.

