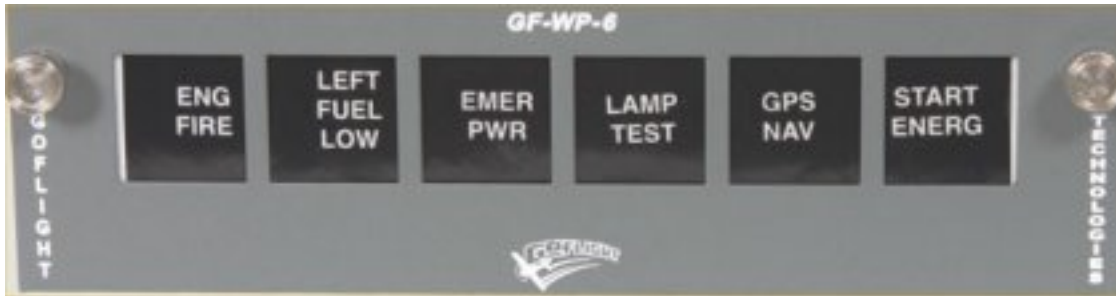




GF-WP6 Warning Panel



Congratulations on your purchase of a **GoFlight GF-WP6 (WP6 Warning Panel)** module, part of the extensive family of GoFlight GF-AC Cockpit Control System modules. The GF-WP6 is designed to operate with a wide variety of aircraft and is sure to make your flight simulation experience more realistic and enjoyable.

The steps below will assist in the installation, configuration and operation of the GF-WP6. Following these instructions will help to get you up in the “virtual skies” as quickly as possible.

Installing the GF-WP6

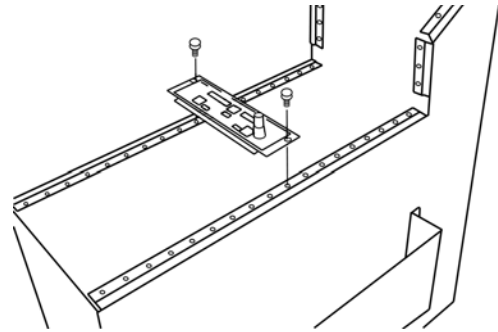
NOTE If you own other GoFlight hardware and have already installed the most current version of software on your system, you do not need to install the software again. Simply skip the software installation steps in the instructions below.

1. Get on line and go to www.goflightinc.com.
2. On the home page click Support/Downloads (**Note – this will need to be changed to reflect the new website.**)
3. Click on “Module Support Software” to download our latest module drivers and configuration software.
4. Click “Run” or “Save” and follow the instruction to load your software.

If the software installer detects that GoFlight software is already installed on your system, it will prompt you to overwrite. Click the **Yes** button to overwrite the existing version of GoFlight software. This is useful if you wish to keep the configuration settings for other GoFlight modules installed on your system.

1. If you are planning to install the GF-WP6 module into a GoFlight rack enclosure, install the module in any desired location in the enclosure. Fasten the module in place using the two thumbscrews that are included in the GF-WP6 packaging being careful not to over-tighten them.

Installing the GF-WP6 into the GoFlight Flight Deck Console.

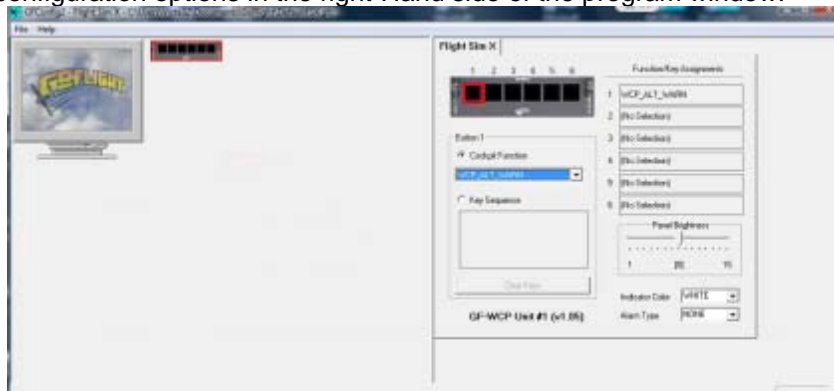


Installing the GF-WP6 into the GoFlight Flight Deck Console.

5. Plug the USB cable “B” connector end (square) into the connector on the back of the GF-WP6 circuit board.

6. Plug the USB cable “A” connector end (rectangular) to a USB port on your computer or USB hub. Once the operating system recognizes the GF-WP6, you will see the GF-WP6 “wakeup” Sequence. The LED displays will illuminate that indicates that the GF-WP6 has been detected by your computer and is ready to use.

1. After you install the GoFlight software and connect the GF-WP6 for the first time, run the GFConfig program, which is located in your Programs menu under “GoFlight”. Verify that GFConfig displays an icon representing the GF-WP6 unit on the Left-hand side of the program window. Click on the GF-WP6 icon to show the configuration options in the right-Hand side of the program window.



Example

Configuring the GF-WP6

To select the functions that you want your GF-WP6 to perform, you choose selections from function lists presented in the *Configuration View*, the right-hand panel in the GFConfig program window. The Configuration View presents a tab control for each flight simulator program that is detected on your computer. When selecting functions for the GF-WP6, Make sure that you have selected the tab control corresponding to the flight simulator you wish to

Configure the GF-WP6 functions for assignment.

Choose from the pull down menu functions.

Highlight the button you want to program by clicking on it.

Now scroll down the menu and set the function you want on that button. Repeat till all buttons are programmed.

Note: Under the main menu is the indicator color and alarm Type for each button. If the function you are using is a alarm Or cautions don't forget to set it in the alarm type menu.



Example

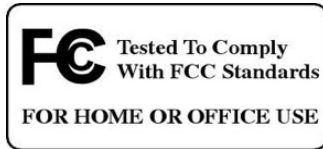
GF-WP6 Labels

The GF-WP6 comes with a set of 60 adhesive-backed and re-usable labels.

If you have any questions or problems setting up your GF-WP6 you can contact our Tech Support At techsupport@goflightinc.com or call 503-895-7020

LIMITATION OF INCIDENTAL OR CONSEQUENTIAL DAMAGES, SO THE ABOVE LIMITATION OR EXCLUSION MAY NOT APPLY TO YOU.

This warranty gives you specific legal rights, and you may also have other rights which vary from state to state.



GoFlight Technologies, Inc. 163 SW Freeman Ave. Suite D, Hillsboro, Oregon, USA 97123

Phone: 1-503-895-0242

www.goflightinc.com

P/N GF-166-vPOH-002 Revision 2.2 25Sep2010

Copyright © 2010 GoFlight Technologies, Inc. All rights reserved.

Version 2.2